

# Key resources for beginning teachers



By Chloe Hosking  
Growth Team coordinator

## — Teaching tip —

# Supporting your colleagues

Even as an early career teacher, don't forget about the power you have to support your colleagues.

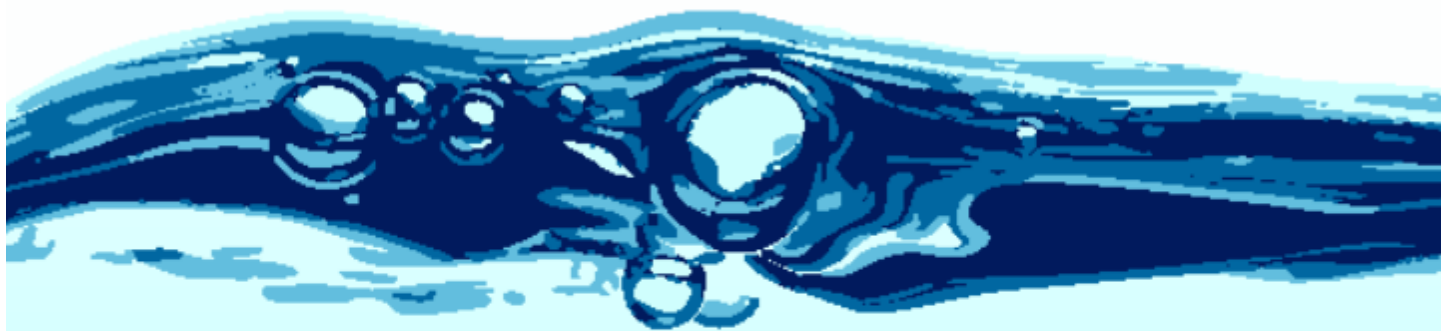
Make them a cuppa, share a helpful resource, or just lend a listening ear.

By building up your team, you'll also be looking after your own wellbeing.

You can also support the wellbeing of yourself and your colleagues by disconnecting when you're not at work. As we approach the end of the school year, remember, you aren't required to write or respond to



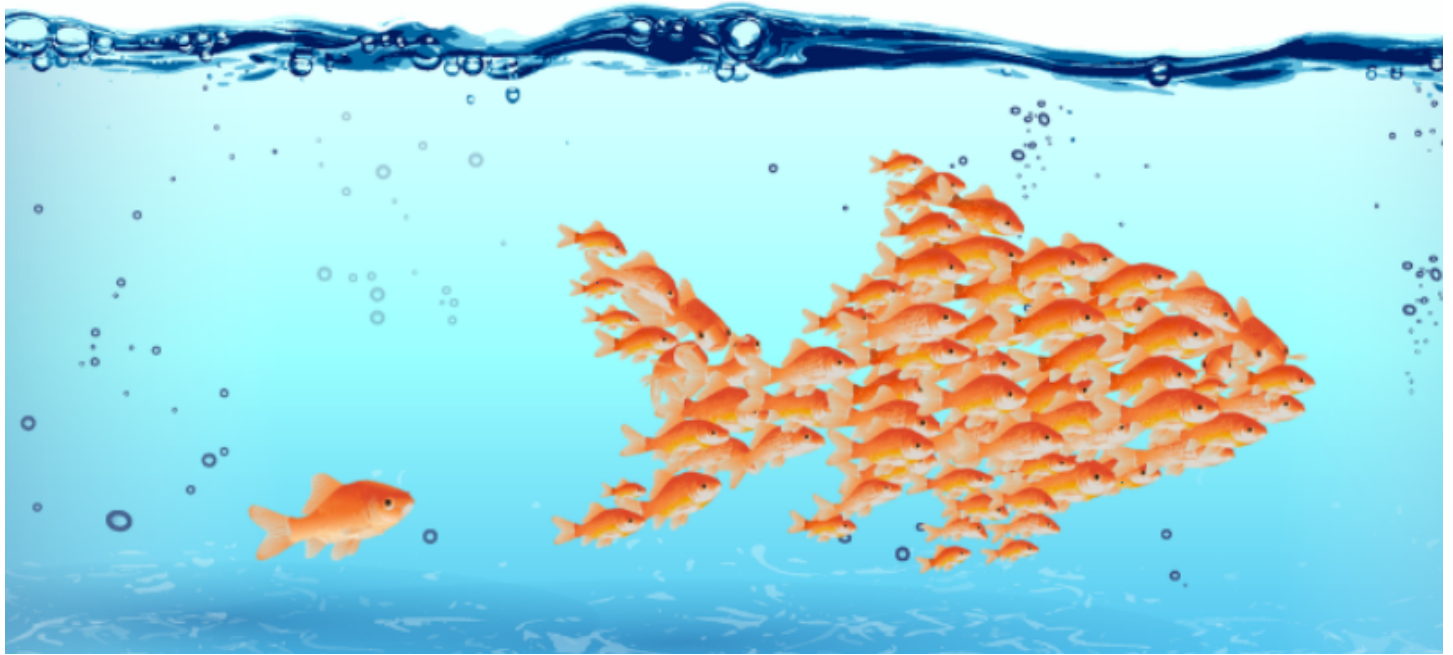




Q

.....

Quit feeling like  
you aren't doing



If you are already thinking ahead to 2025 then now is an excellent time to explore key resources available to you as a Department of Education teacher. Many educators have found these supports invaluable during the early stages of their careers and beyond. They may be particularly useful as you prepare for 2025.

### **SCSA Curriculum Support Materials**

To access these resources, log into the extranet of the School Curriculum and Standards Authority (SCSA) website at [scsa.wa.edu.au](http://scsa.wa.edu.au) and navigate to the K–10 Outline section.

Lesson planning often represents a significant part of a teacher's workload, particularly for newer teachers who may not yet have an extensive collection of lesson plans and resources. These curriculum support materials were introduced as a result of the SSTUWA's successful negotiations in the *2019 General Agreement (Schools)*.

### **Statewide Services Resource and Information Centre (SSRIC)**

The SSRIC offers specialised resources and information services to support teachers of K–12 students with a variety of educational needs, including:

- Culturally and linguistically diverse backgrounds.
- Diverse learning needs, disabilities and learning challenges.
- Vision impairment, deafness and deafblindness.

Teachers can also borrow resources to support general classroom instruction. For more details, search SSRIC on Ikon.

### **In-Class Coaching**

If you are within your first 30 months of teaching and have completed graduate module one, consider applying for the In-Class Coaching Program. This program connects you with a dedicated coach who will provide individualised support at no cost.

Your discussions with your coach are fully confidential and the program offers guidance to:

- Develop and refine your teaching practices.
- Engage in lesson observations and reflective practice.
- Apply insights from graduate teacher modules.
- Progress toward the Proficient career stage.

Many graduates find it invaluable to collaborate with a skilled, external professional on their instructional development. Apply through Ikon by searching for “In-Class Coaching Program” or contact the Statewide Services team at [InClassCoachingProgram@education.wa.edu.au](mailto:InClassCoachingProgram@education.wa.edu.au).

### **Employee Assistance Program**

The department’s Employee Assistance Program (EAP) offers confidential counseling with qualified psychologists for both personal and work-related concerns impacting your wellbeing. Both you and your immediate family members are eligible for up to six free sessions each year, accessible by phone, video or in person.

To schedule an appointment, contact PeopleSense:

- **Phone:** 9388 9000 or toll-free 1300 307 912.
- **Email:** [reception@peoplesense.com.au](mailto:reception@peoplesense.com.au)
- **Online:** [peoplesense.com.au/online-eap-booking](https://peoplesense.com.au/online-eap-booking)



Authorised by Mary Franklyn, General Secretary, The State School Teachers' Union of W.A.

ABN 54 478 094 635 © 2025